

# Technical data

# LEO 27 GT plus

preliminary

**TEUPEN**<sup>®</sup>  
...access redefined

since '77

## PERFORMANCE

Working height, max.	27,00 m
Platform height, max.	25,00 m
Horizontal outreach, max. (100 kg)	14,30 m
Horizontal outreach, max. (250 kg)	12,50 m
Negativ reach, max.	4,90 m
Up and over clearance, max.	12,00 m
Platform capacity, max.	250 kg
Jib, movable	165°
Platform, rotatable	180°
Turntable rotation, max.	450°
To be jacked up on ground slope of	16,7° / 30,0%
Track drive, height- and width-adjustable	26 / 42 cm
Gradeability, max.	16,7° / 30,0%
Slope angle, max.	16,7° / 30,0%
Travel speed, max.	2,5 km/h

## MEASUREMENTS\*

Platform (height) (A)	1,10 m
Platform (length) (B)	1,40 m
Platform (width) (C)	0,70 m
Length (D)	6,45 m
Length without platform (E)	6,45 m
Height (F)	1,99 m
Width, min. (G)	0,89 m
Ground clearance, max. (H)	0,31 m
Track (length x width) (I)	1,50 x 0,23 m
Outrigger:	
■ wide (length) (J) X (width) (K)	4,90 m / 4,70 m
■ narrow (length) (L) X (length) (M)	6,50 m / 2,99 m
■ left or right narrow (width) (N)	3,90 m
■ front or back narrow (length) (O)	5,68 m
Outrigger plate Ø	0,18 m

## WEIGHT\*

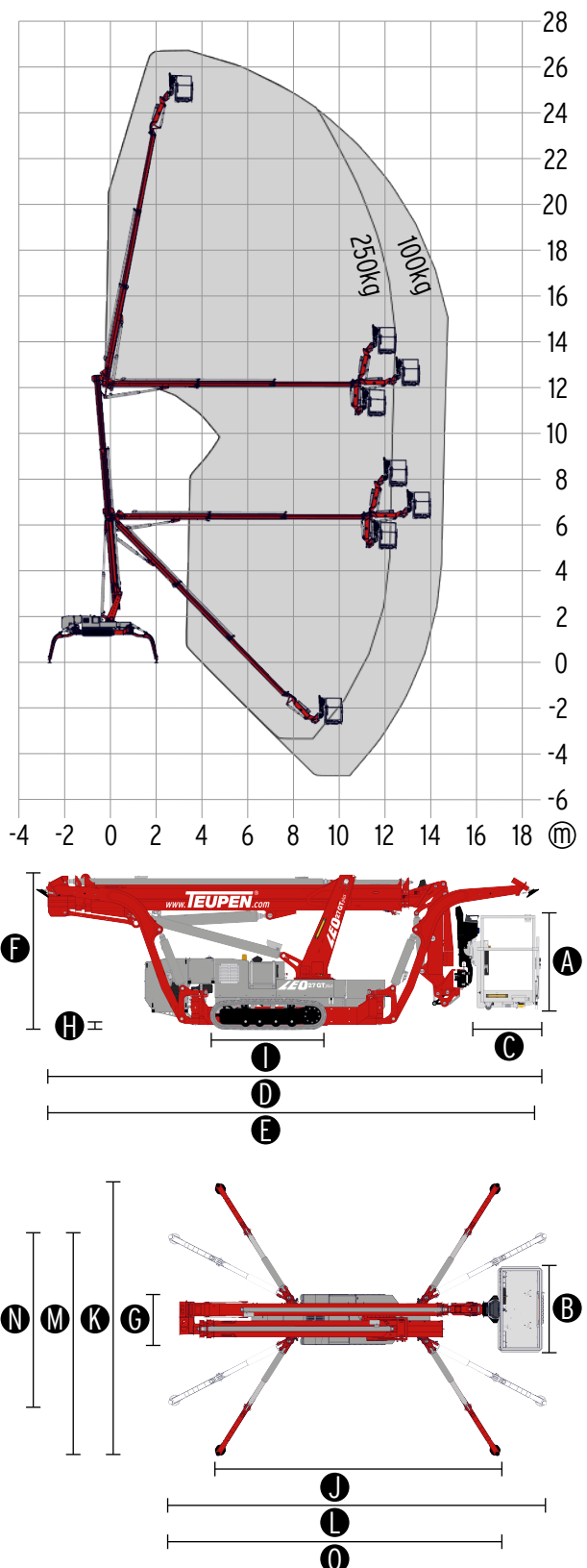
Total weight	3850 kg
Live load in travelling position	4,19 kN/m <sup>2</sup>
Live load in working position	1,75 kN/m <sup>2</sup>
Point load per outrigger plate, max.	29,00 kN

## POWER SOURCES

Standard power sources:	
■ Electric motor	(230 V, 12,9 A, 2,2 kW)
■ Combustion engine (Diesel)	Kubota Z602 (10,8 kW / 14,5 hp)
Fuel tank capacity (Diesel engine)	11,50 l

## POWER SUPPLY

Electric current, max.	230 V / 16 A
------------------------	--------------



## STANDARDS

Harmonised standard DIN EN 280:2016

\* The technical data may deviate +/- 3% from the specified values.  
\* Weight and dimensions may vary depending on options and accessories.

# Equipment

# LEO 27 GT plus

preliminary

**TEUPEN**<sup>®</sup>  
...access redefined  
since '77

## CHASSIS

- Powerful track drive with hydraulic braking system
- Precise manoeuvring via sensitive remote control
- Indoor non-marking rubber tracks, with less tread depth the profile enables smooth travelling
- Hydraulically height- and width-adjustable crawler track drive

## STABILISATION

- Electrohydraulic stabilisation with automatic levelling and ground pressure sensor system
- Variable Outrigger system
  - wide supported
  - narrowly supported
  - left or right supported
  - front or back supported
- Wear resistant, ant-friction outrigger pads

## BOOM SYSTEM

- Telescopic lower and upper boom
- All functions available via radio remote control
- Platform positioning into negative work area up to 5 meters below set up level
- 180° platform rotation for additional flexibility
- Jib movable by 165°
- Platform changing system
- Coming home function - automatic return of the boom into transport position

## POWER SOURCE

- Electric motor (230 V, 12,9 A, 2,2 kW)
- Diesel engine Kubota Z602 (10,8 kW / 14,5 hp)
- Start-stop device for combustion engine via radio control

## PRODUCTIVITY, SAFETY, QUALITY

- Power socket in the platform (110 V / 16 A)
- Detachable platform, attachment points for safety harnesses and tool tray
- Drive operation without platform possible
- Lockable storage box
- Protected, internal power track for platform control
- Hydraulic system filled with biodegradable hydraulic oil
- High-quality paint in RAL 3020 (red)
  - Hydraulic cylinders in RAL 9006 (white aluminium)
  - Engine unit & component support in RAL 9006 (white aluminium)
- Unlockable check valves located directly on hydraulic cylinders
- Hydraulic system protected by pressure relief valves
- Hydraulic tank, emergency control, connecting cables and hoses are mounted protected
- Colour display in the control panel
- Additional color display in the chassis
- TEUPEN Fuzzy V control technology with new intuitive operating concept

## OPTIONS\*

- Battery drive (AGM) 48 V including charging device (as of approx. Q3/2024)
- Battery drive (Lithium) 48 V including charging device (as of approx. Q3/2024)
- Custom paintwork, one colour, according to RAL scheme
  - (except metallic coatings, signal- or special colours)
- Custom paintwork, two colours, according to RAL scheme
  - (except metallic coatings, signal- or special colours)
- Water and air connection, jib

## ACCESSORIES\*

- Safety harness
- Track mat (2000 x 800 x 15 mm)
- 4 sliding pads (700 x 220 x 60 mm)
- TOP
- Tree package, including
  - Tree package light - 4 covers, piston rod (outrigger)
- 8 flashlights (outriggers)
- 2 LED headlights (drive unit)
- 3 LED flashlights (turntable)
- 3 LED flashlights (platform)
- 2 LED flashlights (underneath platform)
- 1 LED headlight (platform)
- Platform (GFK) including platform support (700 x 700 mm)
  - Attention, machine is not insulated!
- Lifting device (300 kg capacity)
- Copper strips, pivot point
- Platform ladder monitoring system with boom function cut-off
- Additional hydraulic drive for boom recovery via platform control

## CONTACT

**TEUPEN Maschinenbau GmbH**  
Marie-Curie-Str.13  
48599 Gronau  
Germany

Phone +49 2562 8161-0  
Fax +49 2562 8161-888  
E-mail [mail@teupen.com](mailto:mail@teupen.com)

\* Weight and dimensions may vary depending on options and accessories.

Product specifications are subject to change without notice or obligation. Photographs and drawings in this document are for illustrative purposes only. Refer to the appropriate Operator's Manual for instructions on the proper use of this equipment. Failure to follow the appropriate Operator's Manual when using our equipment or to otherwise act irresponsibly may result in serious injury or death. The only warranty applicable to our equipment is the standard written warranty applicable to the particular product and sale and we make no other warranty, expressed or implied. Products and services listed may be trademarks, service marks or trade-names of TEUPEN Maschinenbau GmbH and/or its subsidiaries in the U.S.A. and many other countries. "TEUPEN", "Access redefined" and "LEO Series" are registered Trademarks of Teupen GmbH in the United States of America and many other countries. © 2021 TEUPEN Maschinenbau GmbH.



2023-A\_en\_GB